



Carving Station Solutions

*Supermarkets & Delis
Restaurants & Cafés • Clubs & Bars*



DCSB400-1CM above **HGSM-4060** *pg. 2*



DCSB400-R24-1 with standard Night Sky base and optional Bright Brass post and shade *pg. 2*



DCSB400-R24-1 with optional Gray Granite base and standard Bright Nickel post and shade. Shown with a **GR2S-36** *pg. 2*



DCSB400-R24-1 with optional Gray Granite base and standard Bright Nickel post and shade *pg. 2*



GRCSCSCL-24 with accessory left-hand sneeze guard, drip pan and cutting board *pg. 3*



ACCESSORIES (CSCL-BOARD shown) *pg. 3*



Decorative Carving Stations

Providing proper food serving temperatures, the Decorative Carving Station combines the Hatco Decorative Heat Lamp with the Swanstone® heated base to create an attractive carving display. These warmers are perfect for chef stations in restaurants, hotels, country clubs, casinos and any catered event.

- Post Mount, Counter Mount or Freestanding with a rounded or rectangular heated stone base (excludes DCS400-1, -1CM)
- Patented telescoping heated decorative lamp with a 30° shade pivot
- Decorative posts and shades are available in three Plated finishes; non-standard colors are non-returnable
- Heated stone bases are made of foodsafe materials and come in three Heated Stone colors; non-standard colors are non-returnable
- Heated base is controlled by an adjustable thermostat and power switch
- Units come with matching cutting board (excludes DCS400-1, -1CM), keeping juices contained and tablecloths clean



DCS400-1CM with optional Bright Brass post and shade optional Bermuda Sand trim ring



DCSB400-R24-1 with optional Bermuda Sand base and standard Bright Nickel post and shade



DCSB400-3624-2 with standard Night Sky base and standard Bright Nickel posts and shades



DECORATIVE CARVING STATIONS

Model	No. of Lamps	Width	Heated Base Surface Area	Voltage	Watts	Ship Weight
DCS400-1	1	203 mm	—	Single Phase	250	15 kg
DCS400-1CM NEW	1	156 mm	—	230	250	8 kg
DCSB400-R24-1	1	660 mm	610 mm dia.	230	600	35 kg
DCSB400-2420-1	1	610 mm	610 W x 508 D mm	230	750	48 kg
DCSB400-3624-2	2	914 mm	914 W x 610 D mm	230	1050	70 kg

DCS400-1 with optional Bright Brass post and shade and Black base



All Decorative Carving Stations Feature:

- Models Ship with: **DCS400-1, -1CM:** One clear coated bulb. **DCS400-1:** Includes black base.
DCSB400-R24-1, -2420-1: One clear coated bulb, base heat, glass sneeze guard and cutting board.
DCSB400-3624-2: Two clear coated bulbs, base heat, glass sneeze guard and cutting board.
Telescoping Clearance: DCS400-1, -1CM: (Bottom of shade to counter) 406-711 mm.
DCSB400-R24-1, -2420-1, -3624-2: (Bottom of shade to top of cutting board) 356-660 mm.
Cord Location: DCS400-1: Base of unit, server side center. **DCS400-1CM:** Under counter.
DCSB400-R24-1: Base of unit, server side on left.
DCSB400-2420-1: Base of unit, server side on left.
DCSB400-3624-2: Base of unit, server side on left.

ALL GLO-RAY BLANKET HEATING ELEMENTS WARRANTED AGAINST BURNOUT FOR ONE YEAR.

OPTIONS (available at time of purchase only)

Shade and Post(s) in Plated Finish – Bright Nickel standard – Non-standard colors are non-returnable –

BNICKEL	Bright Nickel
BBRASS	Bright Brass
ABRONZE	Antique Bronze

Base and Cutting Board in Swanstone® (except DCS400-1, -1CM) – Night Sky standard – Non-standard colors are non-returnable –

GGRAN	Gray Granite
BSAND	Bermuda Sand
NSKY	Night Sky

Trim Ring (DCS400-1CM only) in Swanstone® – Night Sky standard – Non-standard colors are non-returnable –

GGRAN	Gray Granite
BSAND	Bermuda Sand
NSKY	Night Sky

ACCESSORIES

Cutting Board for the DCSB400-R24-1 in Swanstone® (unit comes standard with one Cutting Board) – Non-standard colors are non-returnable –

CBR24GGRAN	Gray Granite
CBR24BSAND	Bermuda Sand
CBR24NSKY	Night Sky

Cutting Board for the DCSB400-2420-1 in Swanstone® (unit comes standard with one Cutting Board) – Non-standard colors are non-returnable –

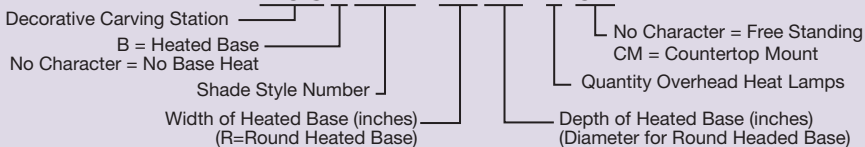
CB2420GGRAN	Gray Granite
CB2420BSAND	Bermuda Sand
CB2420NSKY	Night Sky

Cutting Board for the DCSB400-3624-2 in Swanstone® (unit comes standard with one Cutting Board) – Non-standard colors are non-returnable –

CB3624GGRAN	Gray Granite
CB3624BSAND	Bermuda Sand
CB3624NSKY	Night Sky

COLORS AND FINISHES – PAGE 4

DCSBXXX - XXXX - X CM



Glo-Ray® Carving Stations

An excellent addition to extend food holding times during serving periods is the Glo-Ray® Carving Station. Create a complete serving station for buffets by adding it to Hatco's Flav-R-Savor® Holding Cabinet.

- Overhead ceramic heating elements project high intensity radiant heat over entire target area
- Adjustable clearance of 445 to 570 mm
- Portable – includes a 1829 mm cord and plug
- Shatter-resistant incandescent lights illuminate holding area
- Drip pan and cutting board available
- Available with or without base heat



GRC SCL-24 with accessory left-hand sneeze guard, drip pan and cutting board



GRC SCLH-24 with accessory left-hand sneeze guard, drip pan and cutting board

CARVING STATIONS WITH CERAMIC ELEMENTS

Model	Dimensions W* x D x H	Voltage Single Phase	Watts	Ship Weight
GRC SCL-24	660 x 711 x 572-724 mm	220 or 240	990	26 kg
GRC SCLH-24	660 x 711 x 572-724 mm	220 or 240	1290	26 kg

* Width includes accessory left-hand sneeze guard.

All Carving Stations with Ceramic Elements Feature:

Models Shipped with: Right-hand sneeze guard.

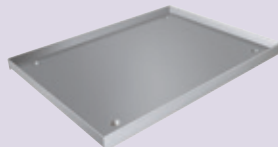
Cord Location: Back side on base.

ACCESSORIES

CSCLB/PACC	Left-Hand Sneeze Guard Kit (1 kg)
CSCL-PAN	Stainless Steel Custom Drip Pan – 508 x 679 x 25 mm (4 kg)
CSCL-BOARD	NSF Approved Cutting Board – 457 x 610 x 44 mm (9 kg)



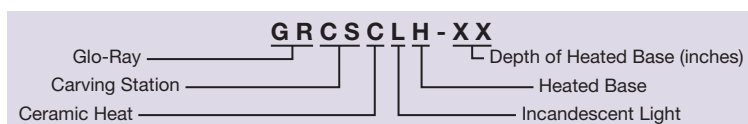
CSCLB/PACC



CSCL-PAN



CSCL-BOARD



ALL CERAMIC AND BLANKET HEATING ELEMENTS WARRANTED AGAINST BURNOUT FOR ONE YEAR.



DCSB400-R24-1 with optional Gray Granite base and standard Bright Nickel post and shade

Plated Finishes and Stone Sample Colors

PLATED FINISHES



Bright Brass



Bright Nickel



Antique Bronze

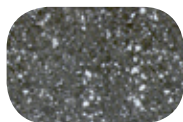
HEATED STONE COLORS*



Gray Granite



Bermuda Sand



Night Sky

Colors are a representation and may not exactly match our colors. Consult factory for possible color matching options on these colors. Non-standard colors are non-returnable.

To order a Hatco Paint Chip & Stone Sample Colors Sheet, visit www.hatcocorp.com / Order Literature / Sales Literature / Sell Sheets.

* Simulated Stone



Scan with web-enabled
mobile device to visit
www.hatcocorp.com



Hatco Corporation
P.O. Box 340500 | Milwaukee WI 53234-0500 USA
Tel: 414-671-6350 | Fax: 414-671-3976
www.hatcocorp.com | intlsales@hatcocorp.com