



F-Style Large Capacity Ice Storage Bins

Models

 F-700

 F-1300

 F-1325

 F-1650

 FC-1350


F-1300 Ice Storage Bin



FC-1350 Ice Storage Bin & Cart System

Standard Features

Manitowoc F-style large capacity ice storage bins are equipped with a sliding ice gate for increased employee safety, easier ice removal, and reduced spillage.

Choose a bin width from 30", 48" or 60", with application ice storage capacities of 680 lbs., 1320 lbs. or up to 1660 lbs.

Sliding Ice Gate

- Controls ice flow into snout for easy removal with either scoop or shovel
- Returns easily to full down position

Quality Construction

- Stainless steel exterior
- Heavy-duty welded construction
- Non-CFC foamed-in-place insulation

- Impact-resistant sliding windows for easy bin inspection

Durable Polyethylene Lift Door

- Ball catch hinge holds bin door open when scooping ice
- Eliminates sharp corners and gaskets
- Provides outstanding durability
- Offers maximum access for fast, easy ice removal

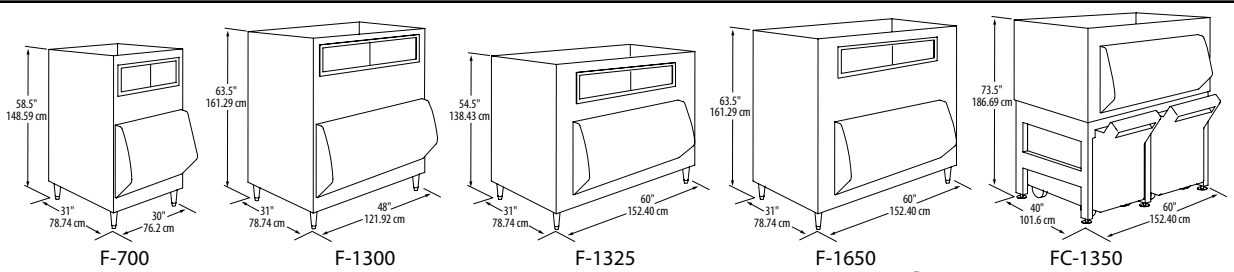
Warranty

Bin & Accessories: 3-Year Parts & Labor
Carts: 2-Year Parts & Labor





F-Style Large Capacity Ice Storage Bins

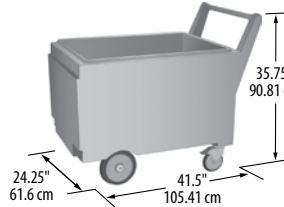


Standard Equipment

F-Series Bins Include: set of (4) 6" bin legs, ice scoop, stainless steel adapter for 30" or 48" Indigo Series Cubers (see chart)

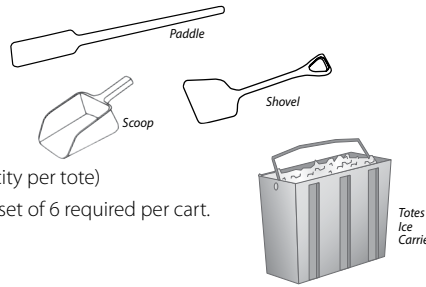
FC-1350 Bin and Cart System Includes:

bin, base, (2) 240 lb. capacity carts with lids, set of (6) flanged legs, Ice Paddle, stainless steel adapter for 30" or 48" Indigo Series Cubers (see chart)



Accessories

- | Model # | Description |
|---------|--|
| K-00412 | Paddle 46.5" (118.11 cm) length |
| 3302593 | 82 oz. Scoop |
| K-00414 | Shovel 36" (91.44 cm) Length |
| K-00416 | Totes Ice Carrier, Set of 6 (25 lb. capacity per tote) |



Totes for use with FC-1350 cart. One set of 6 required per cart.

Application Storage Capacity

	Model	AHRI* Lbs. / kg	Cu. Ft.
30"	F-700	680	20.3
		308	
48"	F-1300	1320	38.0
		599	
60"	F-1325	1325	39.7
		601	
	F-1650	1660	47.7
		753	
FC-1350	1350	39.9	
	612		

Application storage capacity is based on 90% of total volume x 35 lbs/ft3 average density of ice.

Ice Deflectors — Required

Manitowoc Cuber Model	Ice Deflector Model Number
i-450, i-500, i-606, i-906, i-1106, i-1200	K-00347
i-1406, i-1800	K-00349
i-1470C, i-1870C, i-2176C	K-00382 (for single ice machine) K-00383 (for side-by-side ice machines)
S-3070C, S-3300	K-00391

Bin Adapters

Model	Ice Makers on bin	Bin Width	i-500	i-606	i-906 i1106 i1200	i686C i976C i1176C	i1470C i1870C i2176C	i1400 i1800	RNS0308 RNS0600 RNS1078C RFS0300 RFS0650 RFS1278C	RNS1000 RFS1200 RFS2378C RFS2300	RF2300	S3300 S3070C
Model Width			30"	30"	30"	30"	30"	48"	22"	30"	36.7"	48"
F-700	1	30"	K-303000 Single head Adapter (included with bin)					N/A	+K302200	K303000 included	N/A	N/A
F-1300	1	48"	K-483048 Single head Adapter (included with Bin)					N/A				
F-1325, F-1650	1	60"	K-603048 Single head Adapter (included with Bin)					N/A				
	2*	60"	K-603030 Side-by-Side 30" Head Adapter					N/A	+K-00421 & K-603030	+K603030	N/A	N/A
FC-1350	1	60"	K-613048 Single head Adapter (included with Bin)					N/A				
	2*	60"	K-613030 Side-by-Side 30" Head Adapter					N/A	+K-00421 & K-613030	+K603030	N/A	N/A

*For side by side application use with water-cooled, or ice machines with top air discharge option. Check machine clearance requirements. Shaded area indicates not a product application